

TOUCHSTONE FMS

HxGN Enterprise Asset Management



To maintain critical assets, resources and cost efficiency, your maintenance staff need accurate information that helps them achieve improved asset performance that extends the asset life-cycle.



With HxGN Enterprise Asset Management (EAM), businesses can make proactive decisions that prevent equipment failure and maximise performance and productivity.

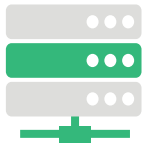
HxGN EAM offers end-to-end maintenance, repair, and overhaul (MRO) that supports and enables tight control over work orders, resource scheduling, spares and parts, management, and all related costs. Just as important, fleet functionality allows you to manage, track, and maintain vehicles and other rolling stock.



Whether you're maintaining your own assets or renting equipment that needs to be maintained, HxGN EAM saves time, money and contributes to performance and the profitability of your business.



BENEFITS



Work with one set of data, one set of costs, and one source of the truth.

HxGN EAM includes: Inventory, Purchasing and Planning functionality, simplifying complexity and costs.

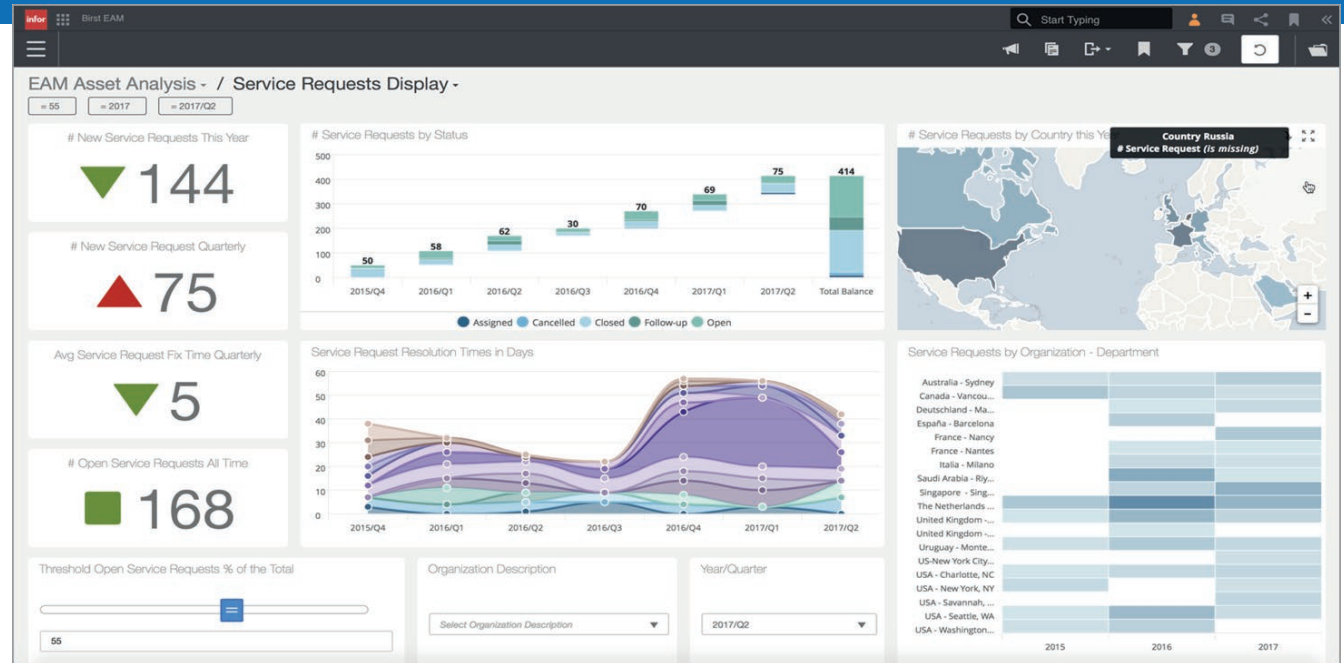
Eliminate redundant data entry, system duplication, and the need for third party add-on solutions.

Smoothly connect EAM maintenance processes with Infor SunSystems Financial Ledgers automatically triggering management & cost reporting.

HxGN EAM will minimise paper trails, and centralise all documentation, specifications and supporting AP invoices.

Real-time management reporting is available providing valuable insight into the total cost of ownership.

Users can plan and schedule work orders, add standard tasks, back flush parts, spares, material, and labour in one transaction, and automate the WO creation with follow-up jobs to check quality, monitor work completed and inventory used with fast access to relevant information.





FULLY INTEGRATED FOR ENTERPRISE OPERATIONS

HxGN Enterprise Asset Management is purpose built to support 'enterprise operations' with scalable modern technology, deployable in the CLOUD or On-Premise conforming to your preferred IT strategy.

Information flows effortlessly across modules and functions including Infor's integrated financial ledgers. Using a common reporting tool and familiar user interface, this minimises training time and costs.

SERVICE OBJECT CONTROL

Objects (or Assets) are created and assembled in a hierarchical structure, with maintenance planned and executed at all levels in the structure. Statistics can be created at the individual level, or as a sum of all sub-levels. The object is automatically updated with the information registered, for example, a work order.

Quick and easy access to all information in the system includes: Spare parts history tracking, a maintenance calendar, approved spare parts, condition based assessments for daily inspections, technical specifications, and other documents or notes.

PLANT AND EQUIPMENT MAINTENANCE

Within HxGN EAM, use of equipment on jobs or capital projects automatically updates the maintenance schedule and reserves planned downtime capacity. HxGN Enterprise Asset Management can receive critical equipment usage data (e.g. machine hours in use) for accurate scheduling and execution of maintenance plans, helping to extend the asset useful life.

PREVENTIVE MAINTENANCE

Preventive Maintenance is calculated in advance based on actual numbers or activities captured within the system. This allows your business to plan your maintenance jobs in advance, using your own schedule.

Data is collected that serves as the basis for a schedule-driven work order. In the event of a failure situation, ad-hoc work orders can be generated and pushed into the existing workforce schedule including through use of HxGN EAM Mobile applications.

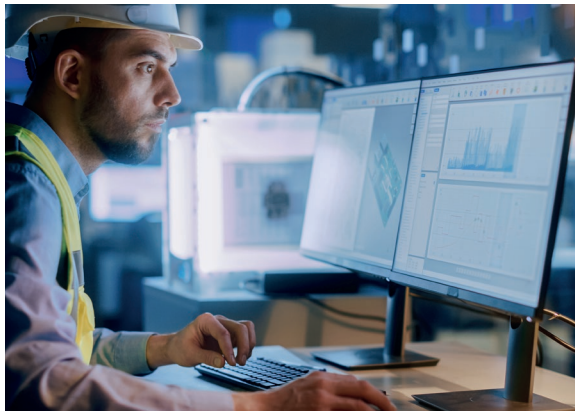




FLEET MAINTENANCE

Manage your fleet or rolling stock using preventive maintenance scheduling based on time or mileage or both.

Flexible asset structures allow for easy maintenance which trigger cost roll ups through the vehicle asset structure.



REMEDIAL MAINTENANCE

Users can register remedial maintenance requests so that organisations can prevent costly breakdowns.

Maintenance Request options include new jobs, planning, error reporting, and machine stoppages that each trigger a maintenance event.



RESOURCE PLANNING



A graphical calendar streamlines work order planning and execution, including jobs for preventive maintenance. Available resources are displayed by job type, object or location, and capacity.

Multiple work orders can be combined into a single work order with follow on activities. For example, preventive maintenance for a specific asset can be accumulated using an ad-hoc work order.

INTEGRATED WORKFLOW

Ensure that work orders follow a predefined process and that jobs cannot skip or pass critical stages in the workflow process. Resource schedules are shown graphically by work order and job type.

Workflow also can be used when predefined tooling and gauge calibrations are part of a controlled quality program, which also drives HSE compliance.





touchstone
ASSET MANAGEMENT SOLUTIONS

46 Worship Street, London, EC2A 2EA | E:info@touchstonefms.co.uk | +44 (0)20 7121 4702

Copyright © 2022 Touchstone FMS